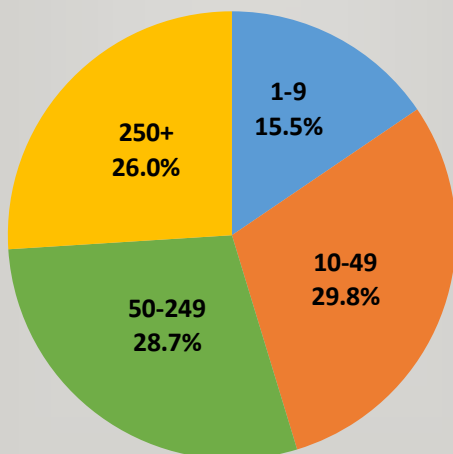


2017 Missouri Businesses by Size



Percentage of Employment by Business Size

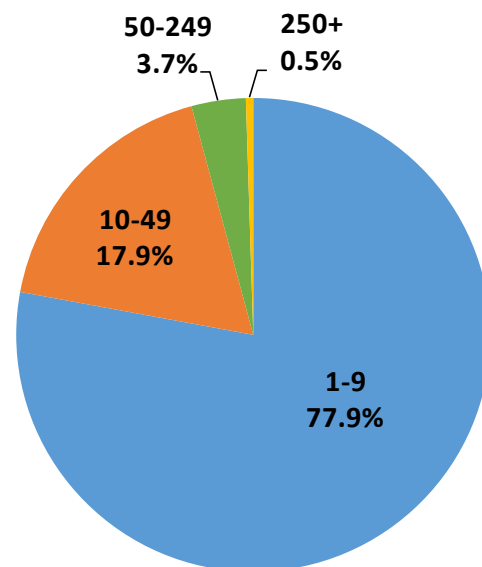
Small businesses in Missouri employ a large part of the private sector workforce. 45% of private sector employees work for a small business (less than 50 employees). Medium sized businesses (50-249 employees) employ 29% of the private sector workforce, while large employers (250 or more) employ 26%.



Number of Businesses by Size

Missouri had 190,829 private sector employers in the 1st quarter of 2017.* Very small businesses comprised a majority of this total, with 77% of Missouri businesses employing less than ten people. Firms employing 1 to 49 workers made up 95% of all businesses in Missouri.

Number of Employees	Number of Businesses
1-4	120,954
5-9	27,741
10-19	19,938
20-49	14,239
50-99	4,592
100-249	2,397
250-499	664
500-999	198
1000+	106
TOTAL	190,829

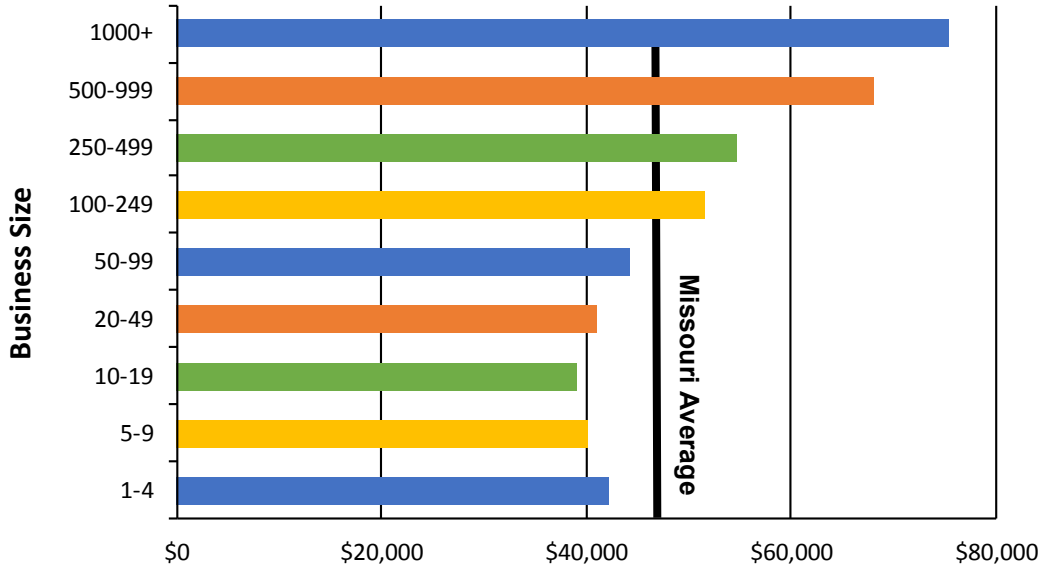


*See notes for source and details.

Wages by Business Size

Wages were calculated using 1st quarter data from the Bureau of Labor Statistics. The average annual wage in Missouri for 2017, regardless of business size, was \$47,810. Wages were highest at businesses that employed 1,000 or more people with average wages equaling \$75,504. Establishments that employed 10 to 19 people had the lowest average wage at \$39,052.

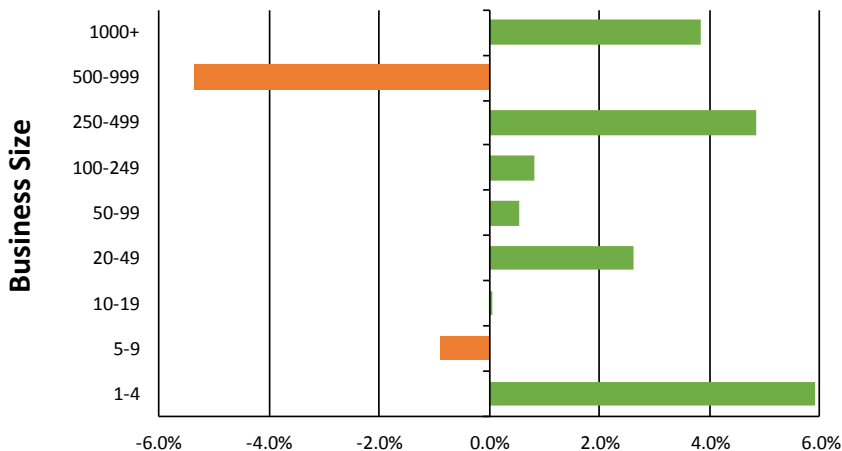
Average Wages by Business Size



2017 Employment Trends by Business Size

Employment levels were calculated using 1st quarter data from the Bureau of Labor Statistics. Most business size classes experienced an increase in employment except two. Businesses that ranged from 500 to 999 and 5-9 experienced a reduction by -5.3 percent and -0.9 percent, respectively. The largest growth in 2017 was with businesses that employed 1-4 people, which experienced a 5.9 percent increase from 2016 to 2017. Overall, Missouri businesses added 35,549 employees between 1st quarter 2016 and 1st quarter 2017.

Employment Change from 2016 to 2017 by Business Size

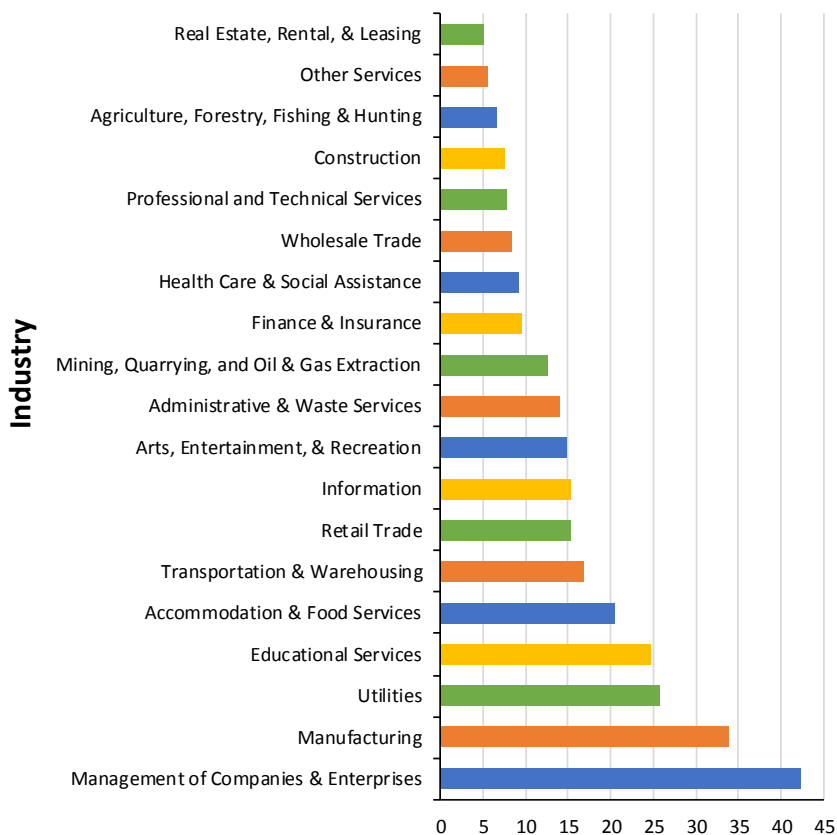


Business Size	Employment Change 2016-2017
1000+	8,917
500-999	-7,684
250-499	10,449
100-249	2,895
50-99	1,713
20-49	10,764
10-19	167
5-9	-1,643
1-4	9,971
Total	35,549

Average Size of Business by Industry

The average business size in Missouri in 1st quarter 2017 was 16 employees. Two industries had an average employment of 30 or more. The *Management of Companies* industry had the largest average size with 42 workers per business. *Manufacturing* and *Utilities* were industries that also had high average employment with 34 and 26 workers per business, respectively. *Real Estate* industries had the lowest average employment with 5 workers per business. *Other Services* and *Agriculture, Forestry, Fishing & Hunting* each averaged at 6 workers per business.

Average Employment per Industry



MISSOURI ECONOMIC RESEARCH AND INFORMATION CENTER

This workforce product was funded by a grant awarded by the U.S. Department of Labor's Employment and Training Administration. The product was created by the recipient and does not necessarily reflect the official position of the U.S. Department of Labor. The U.S. Department of Labor makes no guarantees, warranties, or assurances of any kind, express or implied, with respect to such information, including any information on linked sites and including, but not limited to, accuracy of the information or its completeness, timeliness, usefulness, adequacy, continued availability, or ownership. This product is copyrighted by the institution that created it. Internal use by an organization and/or personal use by an individual for non-commercial purposes is permissible. All other uses require the prior authorization of the copyright owner.

July 2018



NOTES:

The Missouri Economic Research and Information Center (MERIC) monitors business sizes through unemployment insurance accounts established in the state. This allows MERIC to gauge the number of businesses by size, industry, and wages.

Even though annual data is available for employer size counts (page one), 1st quarter is used for data congruency across multi-source availability being subject to only 1st quarter release at the time of this document.

Business data is derived from the Quarterly Census of Employment and Wages, a cooperative program between the Bureau of Labor Statistics and state labor market information centers.

Non-employer businesses, such as sole proprietors, are monitored through a U.S. Census program that uses administrative data, chiefly IRS returns, to develop statistics. Non-employer businesses account for less than 4 percent of all sales but do account for the largest number of businesses. More information is available at:

<https://www.census.gov/programs-surveys/nonemployer-statistics.html>

