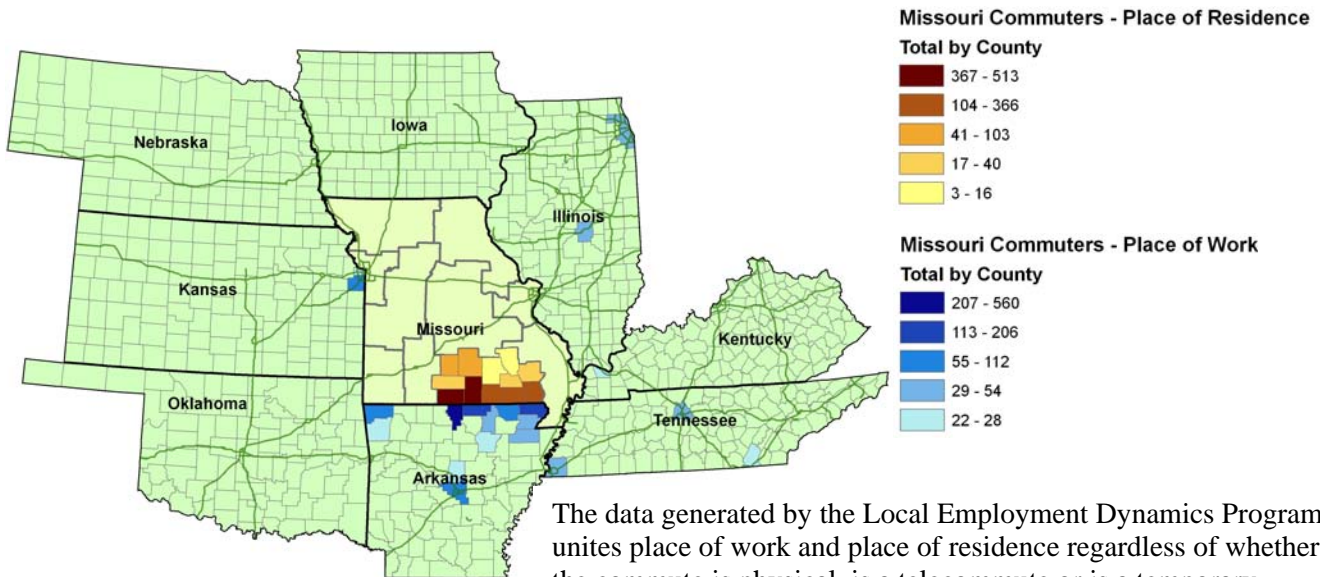


# Cross-State-Line Commuting from the South Central Missouri WIA

This report highlights cross-state commuting patterns for the South Central Workforce Investment Area (WIA) in Missouri. Specifically, this analysis focuses on non-Missouri residents coming to the South Central WIA to find employment, and South Central WIA residents leaving to work out-of-state.

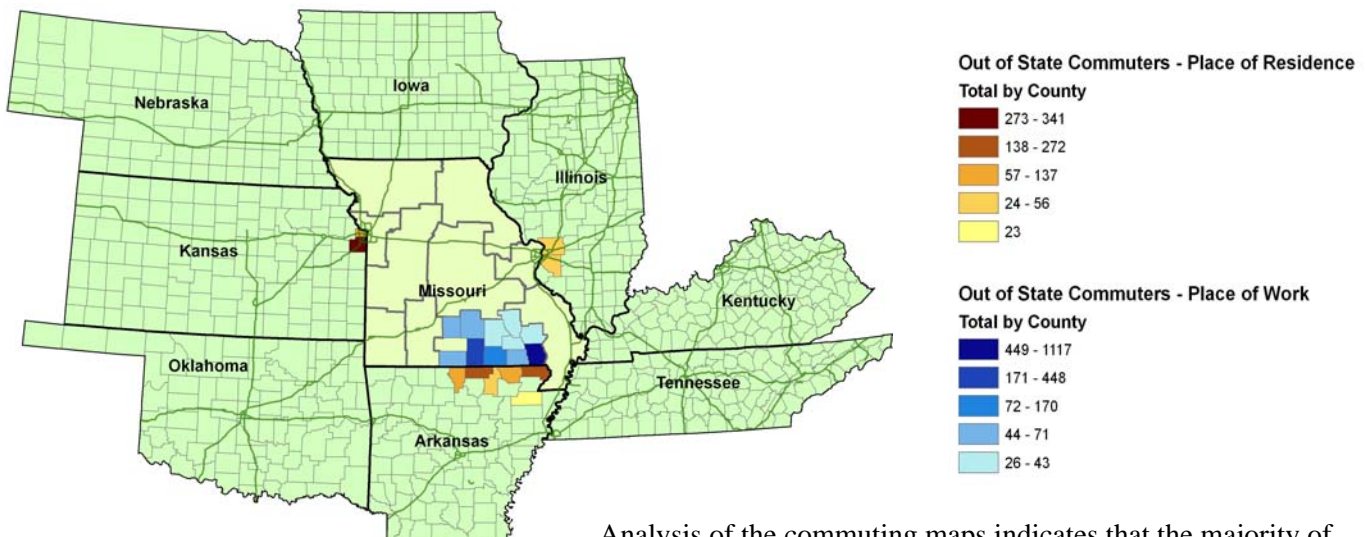
## South Central WIA Commuting Patterns

### Commuting Out of Missouri



The data generated by the Local Employment Dynamics Program unites place of work and place of residence regardless of whether the commute is physical, is a telecommute or is a temporary consultancy. Therefore such long distance commuting patterns as between Kansas City, Kansas and Poplar Bluff, Missouri may represent weekly commutes or consultancy arrangements.

### Commuting In to Missouri



Analysis of the commuting maps indicates that the majority of commutes to and from the South Central WIA are traditional physical commutes.

## Commuting Connections with Other WIAs

South Central WIA	
Live and work in the South Central WIA	8,173
Live in South Central WIA , work in Mo outside of South Central WIA	17,239
Work in South Central WIA , live in Mo outside of South Central WIA	10,789
Live in South Central WIA , work outside of Missouri	2,220
Work in South Central WIA , live outside of Missouri	2,131

Roughly a third more workers leave the South Central WIA (19,459) for employment as enter it (12,920).

Live in South Central WIA , Work in	
Arkansas	1,571
Illinois	180
Iowa	46
Kansas	185
Kentucky	39
Oklahoma	47
Tennessee	152
Outside of Missouri	2,220

The South Central WIA workers leaving to work in other Missouri WIAs primarily go to the Ozark WIA (5,088) or the Central WIA (4,200) for work. Those workers entering South Central from other Missouri WIAs come primarily from the Southeast WIA (3,581) and the Kansas City WIA (3,111). The South Central WIA is closely connected to the northern counties of Arkansas.

## Long Distance Connections with South Central WIA

There is no significant connection between the South Central WIA and non-surrounding states for employment.

## Notes and Sources

Local Employment Dynamics (LED) tables and maps were created by MERIC using LED data for Missouri, Illinois, Iowa, Kansas, Oklahoma, Arkansas, Kentucky and Tennessee housed at Cornell University. LED is a program developed by the US Census Bureau, in partnership with the state labor market information offices and the IRS. The most recent year for which data are available is 2004.

- Only commuting patterns between Missouri and the surrounding states are reflected in the maps and tables.
- Mapped commuting patterns represent at least 20 primary jobs linked between the other state's county and the Missouri WIA.
- References to commuting between non-surrounding states and a Missouri WIA represent at least 50 primary jobs linked between the other state's county and the Missouri WIA.