

Southeast MO Hotspot – Cape Girardeau

Discovering Employment Trends with Local Employment Dynamics (LED)

Cape Girardeau is an economic and employment center for the Southeast region of Missouri. This report details the workers and industries that make this place a hotspot of economic activity.



Southeast Employment Hotspots

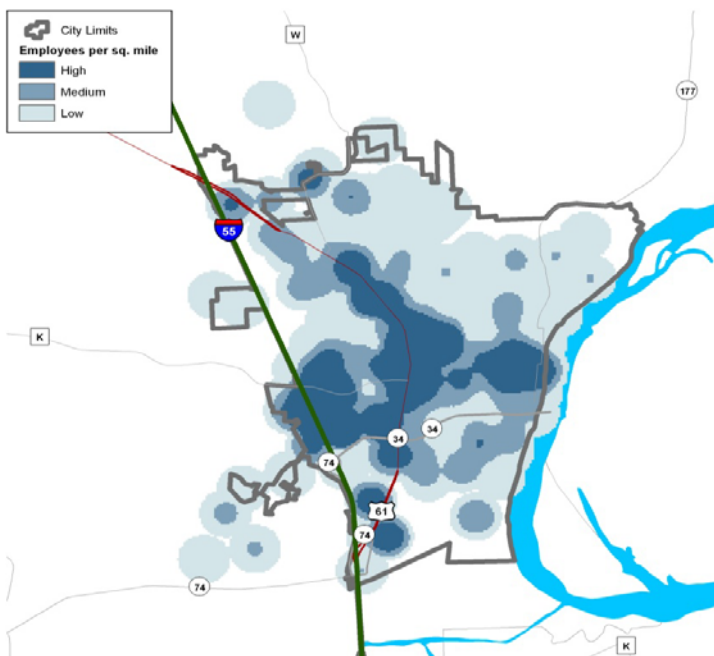
Cape Girardeau, Farmington Sikeston, and Perryville form the largest concentrations of employment in the Southeast Workforce Investment Area. Workforce Investment Areas are the result of the federal Workforce Investment Act of 1998 (WIA) which funds a number of employment and training programs across the nation.

In 2009, 40% of all workers in the Southeast region were employed in the cities Cape Girardeau (25.5%), Farmington (11.6%), and Sikeston (9.9%) which is up slightly from 2002 when the percentage was at 37%. Other cities in the Southeast WIA with 4,000 or more jobs are Dexter City, Jackson City, and Kennett City.

Southeast WIA Region



Cape Girardeau Census Overview



Cape Girardeau's 2009 population estimate from the US Census American Community Survey was 37,657 with a median age of 31.6. This is up from the 2000 Census population of 35,319. Approximately 19% of residents age 25 or above hold at least a bachelors degree. Health & Social Services is the top employing sector in Cape Girardeau, holding over 28% of the city's jobs. This is up slightly from 2002 when the sector employed 27% of the city's jobs.



Cape Girardeau Census Overview

The Local Employment Dynamics (LED) program is a partnership between the U.S. Census Bureau and the agencies in each state that generate and analyze labor market information. The LED Origin-Destination mapping tool allows you to designate either an area where workers work and determine where they live, or designate where residents live and determine where those workers commute.

Top Counties Where Cape Girardeau Workers Resided in 2002		Top Counties Where Cape Girardeau Workers Resided in 2009	
Cape Girardeau County	16,853	Cape Girardeau County	15,096
Scott County	2,701	Scott County	3,331
St. Louis County	997	St. Louis County	959
Bollinger County	521	Bollinger County	713
Perry County	516	Perry County	672
Total Cape Girardeau Jobs	25,636	Total Cape Girardeau Jobs	27,884

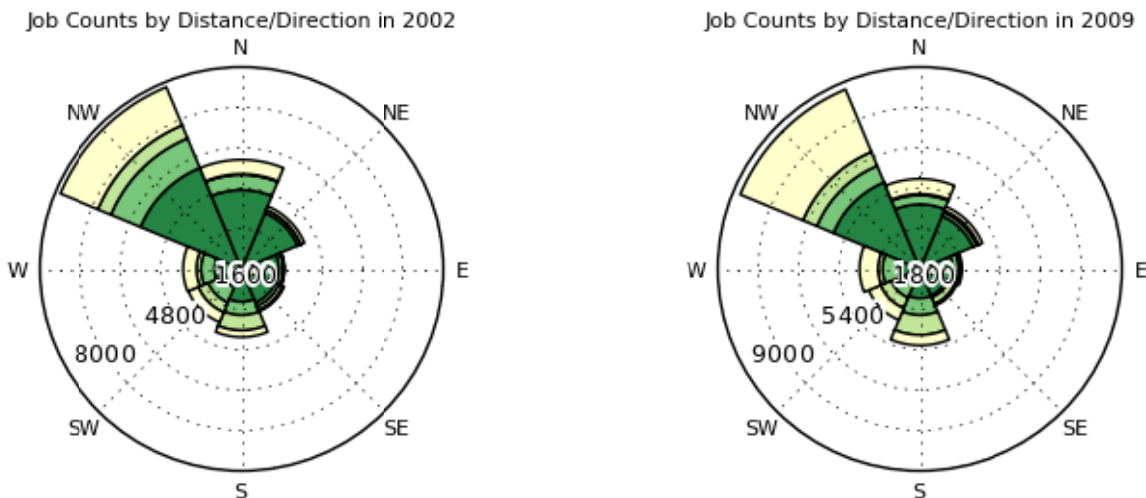
Growing Community Serving the Region

Cape Girardeau is a growing community whose daytime population more than doubles the evening population on a daily basis. The city has two state of the art hospitals that serve over one million people from five states. These hospitals serve as a reason that 28% of the city's jobs are in the healthcare & social services sector. Cape Girardeau is also home to Southeast Missouri State University with over 10,000 students. The city's jobs have grown at nearly the same rate as its population over the past seven years.

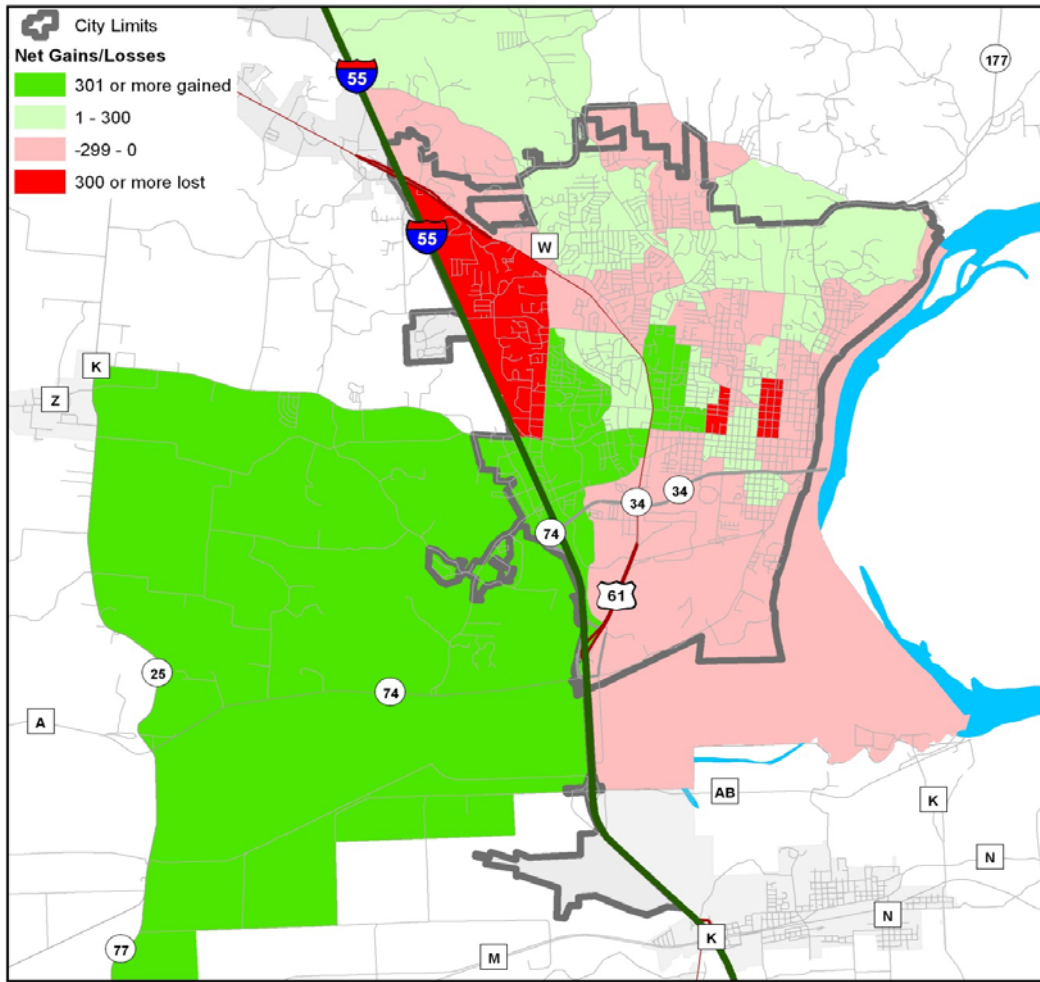
LED On-the-Map: Where Cape Girardeau Workers Live

Cape Girardeau grew jobs by 9% from 2002 through 2009. The majority of Cape's workers continue to reside within Cape Girardeau County, although that number has dropped 10% over the same timeframe. Making up for the loss, however, were most of the other surrounding counties. Scott County residents working in Cape increased 23% during this time. Bollinger County increased 37% and Perry County jumped by 30%. Nearly 1,000 St. Louis County residents worked in Cape Girardeau in 2009 which is nearly identical to the 2002 total.

Distance & Direction Cape Girardeau Workers to Residence (dark green=10 miles or less, yellow=50+ miles)



LED On-the-Map: Cape Girardeau Area Job Trend 2002-2009



Growing & Shrinking Industries

Health Care & Social Services was by far the top employing Cape Girardeau sector in 2009 with nearly 8,000 workers. The *Goods Producing* sector lost about 35% of its jobs during that span, with workers from Cape Girardeau and Scott Counties making up the majority of those losses. The *Trade, Transport, & Utilities* sector lost only 3% of its jobs overall from 2002 through 2009. Cape Girardeau residents working in this sector declined 35%. However, nearly every other nearby county increased its total workforce to the city's employment sector by 20 to 80 workers to help make up for the substantial loss in Cape Girardeau County workers.

