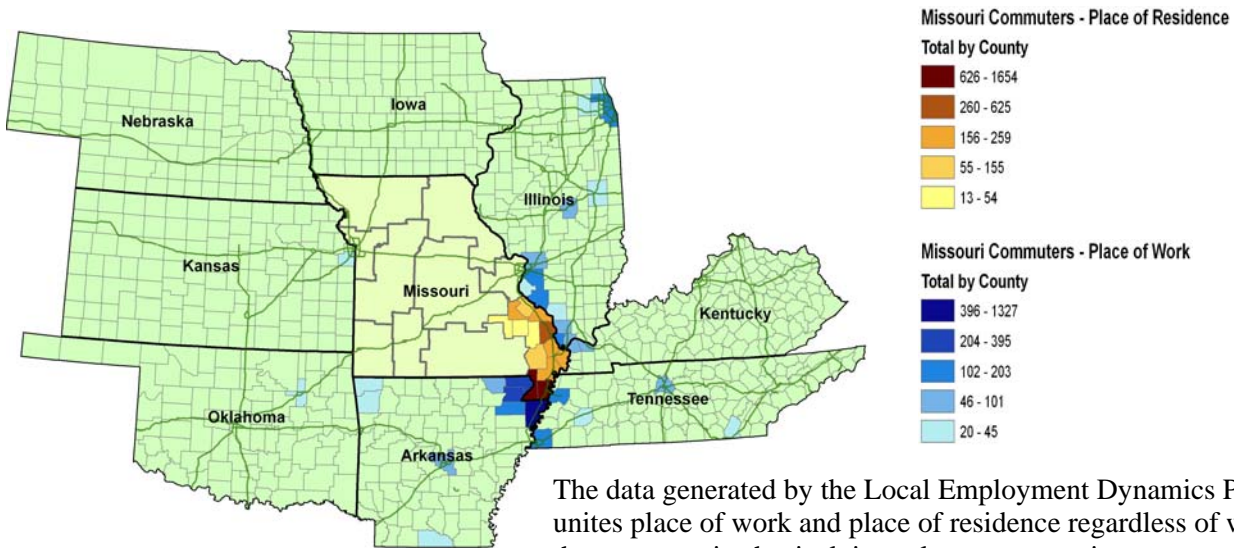


Cross-State-Line Commuting from the Southeast Missouri WIA

This report highlights cross-state commuting patterns for the Southeast Workforce Investment Area (WIA) in Missouri. Specifically, this analysis focuses on non-Missouri residents coming to the Southeast WIA to find work, and Southeast WIA residents leaving to work out-of-state.

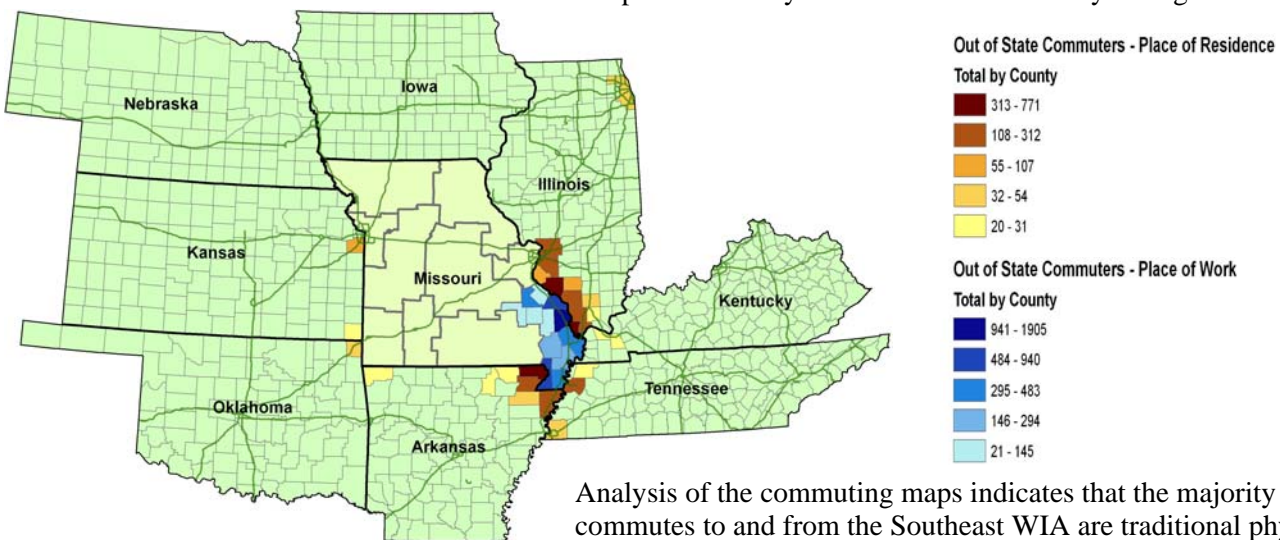
Southeast WIA Commuting Patterns

Commuting Out of Missouri



The data generated by the Local Employment Dynamics Program unites place of work and place of residence regardless of whether the commute is physical, is a telecommute or is a temporary consultancy. Therefore such long distance commuting patterns as between Kennett and Chicago or Kennett and Memphis may represent weekly commutes or consultancy arrangements.

Commuting In to Missouri



Analysis of the commuting maps indicates that the majority of commutes to and from the Southeast WIA are traditional physical commutes. The Southeast WIA is closely connected to the northeastern counties of Arkansas, and the southwestern counties of Illinois are closely connected to the Cape Girardeau area.

Commuting Connections with Other WIAs

Southeast WIA	
Live and work in the Southeast WIA	27,929
Live in Southeast WIA , work in Mo outside of Southeast WIA	28,737
Work in Southeast WIA , live Mo outside of Southeast WIA	14,484
Live in Southeast WIA , work outside of Missouri	4,943
Work in Southeast WIA , live outside of Missouri	6,102

Roughly a third more workers leave the Southeast WIA to find work (33,680), than come into the Southeast WIA (20,586). Nearly half of those who leave the Southeast WIA for employment go

to the St. Louis Metropolitan area (16,281) followed by the Central WIA (3,873), and the South Central WIA (3,581). Those coming into the Southeast WIA were also from the Central WIA (3,490) and the South Central WIA (34,243).

Live in Southeast WIA , Work in	
Arkansas	2,751
Illinois	1,159
Iowa	55
Kansas	79
Kentucky	260
Oklahoma	67
Tennessee	572
Outside of Missouri	4,943

Over half of those leaving the state for employment from the Southeast WIA go to the northeastern counties of Arkansas. A little over 20% more go to Illinois.

Long Distance Connections with Southeast WIA

MERIC analyzed the instances of Missouri workers who live in non-adjoining states. There were 55 workers employed from the Southeast WIA in Webb County, Texas (Laredo).

Notes and Sources

Local Employment Dynamics (LED) tables and maps were created by MERIC using LED data for Missouri, Illinois, Iowa, Kansas, Oklahoma, Arkansas, Kentucky and Tennessee housed at Cornell University. LED is a program developed by the US Census Bureau, in partnership with the state labor market information offices and the IRS. The most recent year for which data are available is 2004.

- Only commuting patterns between Missouri and the surrounding states are reflected in the maps and tables.
- Mapped commuting patterns represent at least 20 primary jobs linked between the other state's county and the Missouri WIA.
- References to commuting between non-surrounding states and a Missouri WIA represent at least 50 primary jobs linked between the other state's county and the Missouri WIA.

