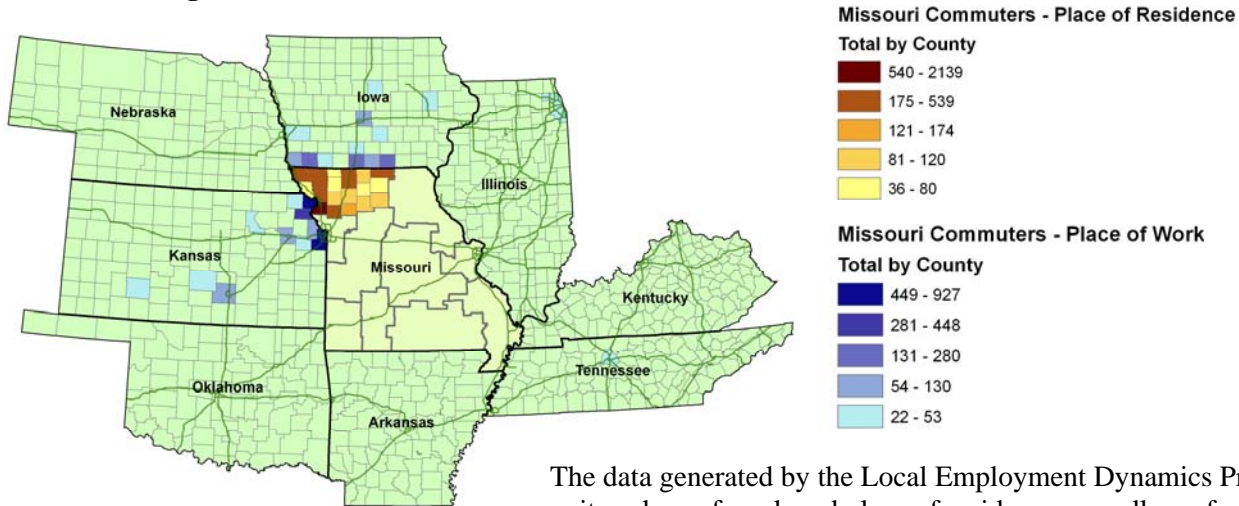


Cross-State-Line Commuting from the Northwest Missouri WIA

This report highlights cross-state commuting patterns for the Northwest Workforce Investment Area (WIA) in Missouri. Specifically, this analysis focuses on non-Missouri residents coming to the Northwest WIA to find employment, and Northwest WIA residents leaving to work out-of-state.

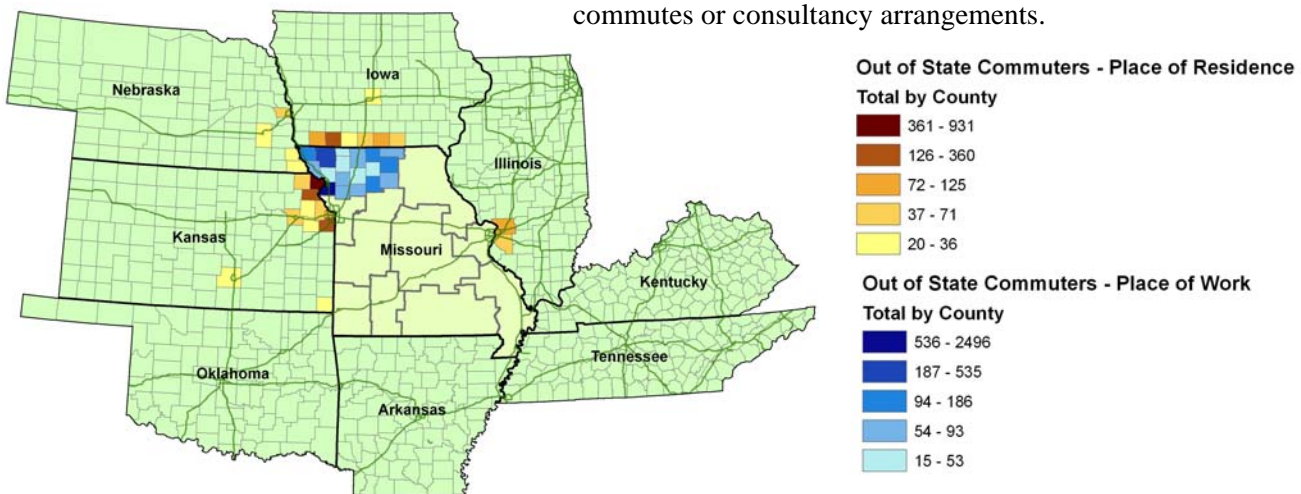
Northwest WIA Commuting Patterns

Commuting In to Missouri



The data generated by the Local Employment Dynamics Program unites place of work and place of residence regardless of whether the commute is physical, a telecommute or a temporary consultancy. Therefore such long distance commuting patterns as between St. Joseph, Missouri and Wichita, Kansas may represent weekly commutes or consultancy arrangements.

Commuting Out Of Missouri



Analysis of the commuting maps shows a strong connection between the Northwest WIA, the southern counties of Iowa and Kansas City, Kansas. The majority of the cross state line commuting is physical and links the Northwest WIA to Kansas City, Kansas and the southern counties of Iowa.

Commuting Connections with Other WIAs

Northwest WIA	
Live and work in the Northwest WIA	17,500
Live in Northwest WIA , work in Mo outside of Northwest WIA	24,597
Work in Northwest WIA , live in Mo outside of Northwest WIA	11,606
Live in Northwest WIA , work outside of Missouri	5,219
Work in Northwest WIA , live outside of Missouri	4,317

Almost twice as many workers leave the Northwest WIA (29,816) as enter it (15,923) for employment. 4,317 of those who enter the Northwest WIA for work come from out of state.

Live in Northwest WIA , Work in	
Arkansas	77
Illinois	105
Iowa	1,383
Kansas	3,510
Kentucky	16
Oklahoma	55
Tennessee	73
Outside of Missouri	5,219

Over half of those entering for work (7,831) come either from the Kansas City WIA (4,664) or the Central WIA (3,167). Almost half of those who leave for work (13,939) go to the Kansas City WIA. Another 3,206 commute or telecommute to the St. Louis WIA.

Long Distance Connections with Northwest WIA

There is no significant connection between the Northwest WIA and non-surrounding states for employment.

Notes and Sources

Local Employment Dynamics (LED) tables and maps were created by MERIC using LED data for Missouri, Illinois, Iowa, Kansas, Oklahoma, Arkansas, Kentucky and Tennessee housed at Cornell University. LED is a program developed by the US Census Bureau, in partnership with the state labor market information offices and the IRS. The most recent year for which data are available is 2004.

- Only commuting patterns between Missouri and the surrounding states are reflected in the maps and tables.
- Mapped commuting patterns represent at least 20 primary jobs linked between the other state's county and the Missouri WIA.
- References to commuting between non-surrounding states and a Missouri WIA represent at least 50 primary jobs linked between the other state's county and the Missouri WIA.