

St. Louis MO Hotspot – St. Louis City & County

Discovering Employment Trends with Local Employment Dynamics (LED)

St. Louis City & County is an economic and employment center for the St. Louis metro area region of Missouri. This report details the workers and industries that make this place a hotspot of economic activity.

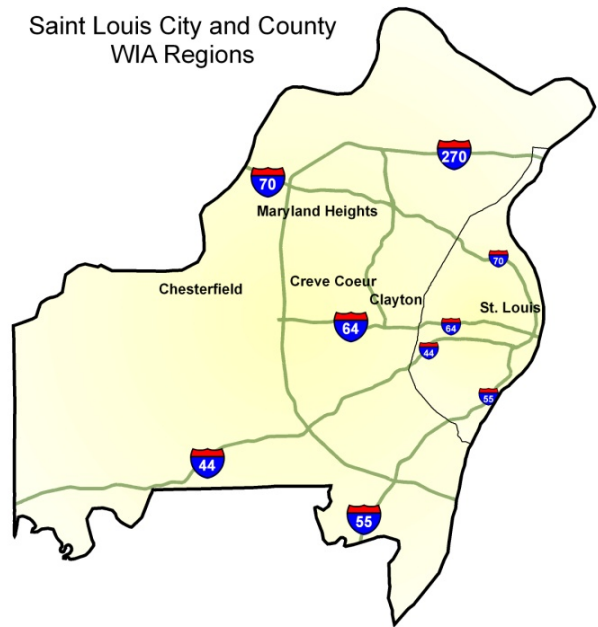


St. Louis Employment Hotspots

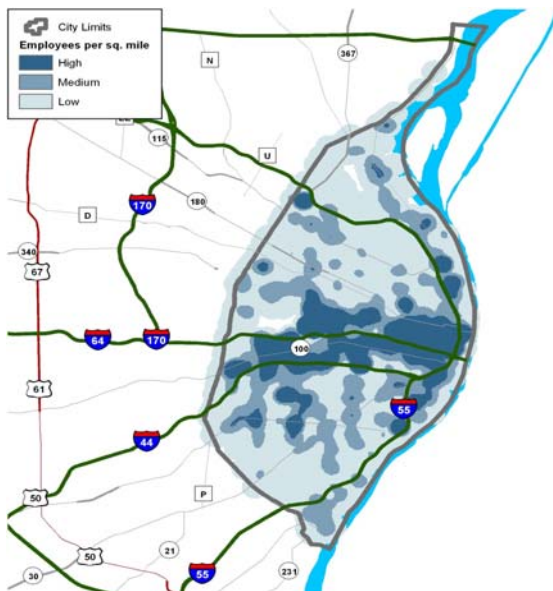
The largest concentrations of employment in the St. Louis Workforce Investment Areas are found in St. Louis City and throughout the various cities in St. Louis County. Workforce Investment Areas are the result of the federal Workforce Investment Act of 1998 (WIA) which funds a number of employment and training programs across the nation.

In 2009, 23.3% of all workers in the St. Louis Region were employed in the cities of Creve Coeur (7.2%), Maryland Heights (6.8%), Chesterfield (5.3%), and Clayton (4%) which is up from 2002 when these four cities made up 19.3%. Other cities in the St. Louis Region WIA with significant jobs include Bridgeton, Town and Country, and Fenton among others.

Saint Louis City and County WIA Regions



St. Louis Census Overview



St. Louis City and County had a 2009 population estimate of 1,300,001 from the US Census American Community Survey with a median age of 37.8. This is down slightly from the 2000 Census population of 1,364,504. Approximately 90.1% of residents are high school graduates. Health & Social Services and Retail are the top two employing sectors in the St. Louis region, together employing approximately 25.1% of the region's jobs. This is down from 2002 when those sectors employed 22.2% of the city's jobs.

Where do St. Louis Area Workers Live?

The Local Employment Dynamics (LED) program is a partnership between the U.S. Census Bureau and the agencies in each state that generate and analyze labor market information. The LED Origin-Destination mapping tool allows you to designate either an area where workers work and determine where they live, or designate where residents live and determine where those workers commute.

Top Municipalities Where St. Louis Region Workers Resided in 2002		Top Municipalities Where St. Louis Region Workers Resided in 2009	
St. Louis	127,738	St. Louis	108,906
Florissant	21,820	Florissant	18,922
St. Peters	15,249	St. Peters	17,659
St. Charles	15,739	St. Charles	17,605
Chesterfield	18,310	Chesterfield	15,867
O'Fallon	14,014	O'Fallon	15,774
Total St. Louis Region Jobs	792,279	Total St. Louis Region Jobs	764,654

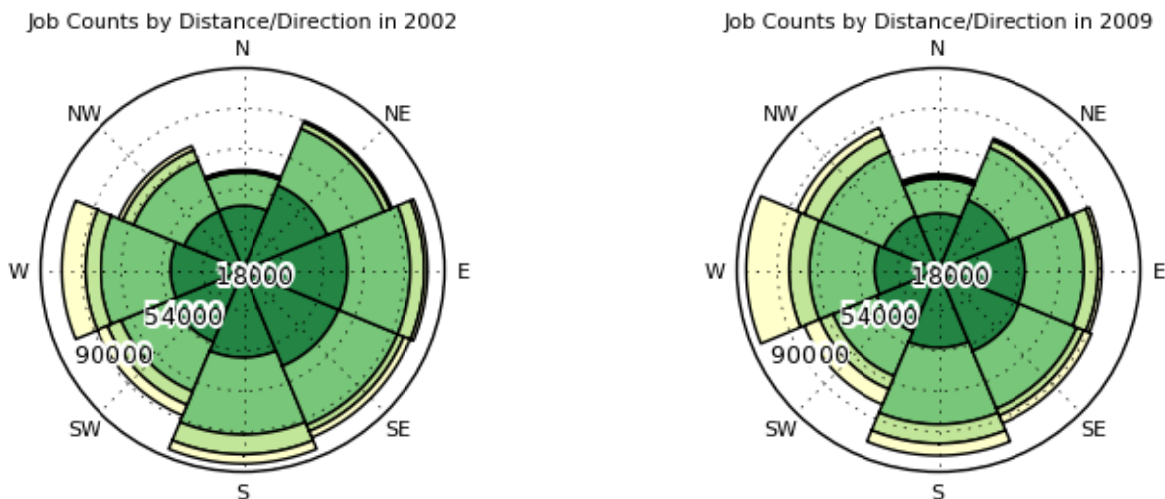
“Gateway to the West”

Located right on the Mississippi River and Missouri/Illinois border, the St. Louis Metro Area (11 total counties in MO & IL) has a population of approximately 2.8 million people which makes it the 18th largest metropolitan area in the United States. St. Louis is home to three major professional sports franchises, several Fortune 500 companies, multiple universities, a high traffic international airport, the famous Gateway Arch, and many other attractions. The St. Louis area is Missouri’s premier economic hotspot.

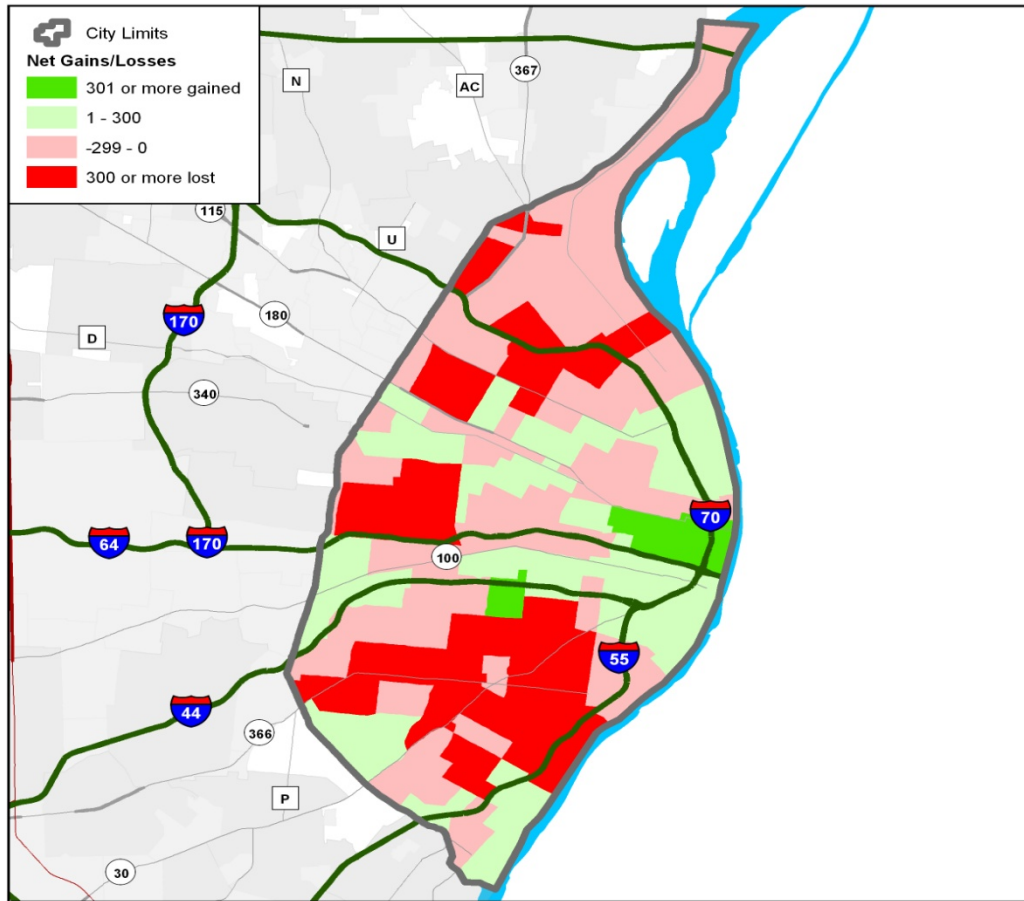
LED On-the-Map: Where St. Louis Area Workers Live

Regarding St. Louis City & County, the combined overall job count decreased by about 3.5% from 2002 through 2009. The pattern was consistent with most other hotspots, with most of the losses coming from within the main city and gains occurring towards the growing suburbs. The workforce from the city limits of St. Louis declined by nearly 15% over this span. St. Peters, O’Fallon, and St. Charles, however, all increased their numbers of residents who work in the St. Louis City & County area.

Distance & Direction West Plains Workers to Residence (dark green=10 miles or less, yellow=50+ miles)
 --Below Represents St. Louis County Workers Only--



LED On-the-Map: St. Louis Area Job Trends 2002-2009



Growing & Shrinking Industries

Healthcare & Social Assistance is the top employing sector in the St. Louis Region making up 15.4% of the workforce. Rounding out the top five are Retail Trade (10.0%), Education Services (8.8%), Accommodation & Food Services (7.9%), and Manufacturing (7.7%). The St. Louis Region's overall job count has declined about 3.5% from 2009 through 2002. The *Goods Producing* sector alone lost 25% of its jobs during this timeframe. The biggest sector loss was taken by St. Louis City residents declining 37%. The *Trade, Transport, & Utilities* sector lost 9% of its overall workforce during this span. St. Louis City residents again were hit the hardest, with 20% fewer residents working in this sector in 2009 than in 2002.

