



Demographic Summary

The State of Missouri falls just under the national averages for most projected population, income, household, and educational trends over the next five years. However, the state is growing at a consistent rate in all categories and excelling at high school graduation rates. For comparisons with regional figures, please see the Regional WIA Demographic Summaries.

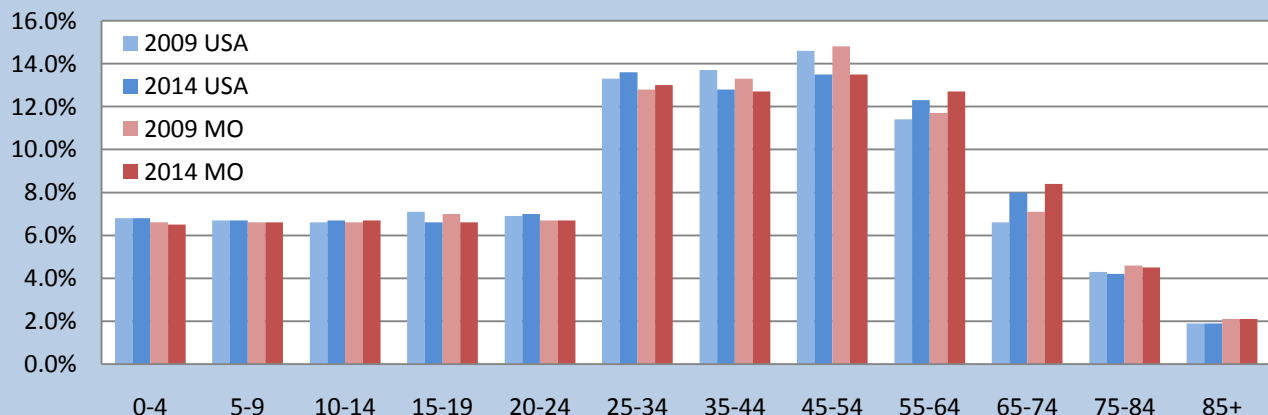


Population Trends

| Population Category | MO 2009 Data | Percentage | MO 2014 Data | Percentage | 2009 - 2014 Change |
|---------------------|--------------|------------|--------------|------------|--------------------|
| Total Pop. | 5,984,833 | - | 6,179,066 | - | 3.1% |
| Median Age | 37.7 | - | 38.1 | - | 1.0% |
| Total (18+) | 4,554,458 | 76.1% | 4,720,806 | 79.4% | 3.5% |
| Total (65+) | 825,907 | 13.8% | 926,860 | 15.0% | 10.9% |
| Male | 2,920,599 | 48.8% | 3,021,563 | 48.9% | 3.3% |
| Female | 3,064,234 | 51.2% | 3,157,503 | 51.1% | 3.0% |

| Population Category | USA 2009 Data | Percentage | USA 2014 Data | Percentage | 2009 - 2014 Change |
|---------------------|---------------|------------|---------------|------------|--------------------|
| Total Pop. | 309,731,508 | - | 324,062,684 | - | 4.4% |
| Median Age | 36.9 | - | 37.2 | - | 0.8% |
| Total (18+) | 235,466,752 | 76.0% | 246,611,703 | 76.1% | 4.5% |
| Total (65+) | 39,645,633 | 12.8% | 45,692,838 | 14.1% | 13.2% |
| Male | 152,387,902 | 49.2% | 159,762,903 | 49.3% | 4.6% |
| Female | 157,343,606 | 50.8% | 164,299,781 | 50.7% | 4.2% |

Population By Age



Ethnicity Trends

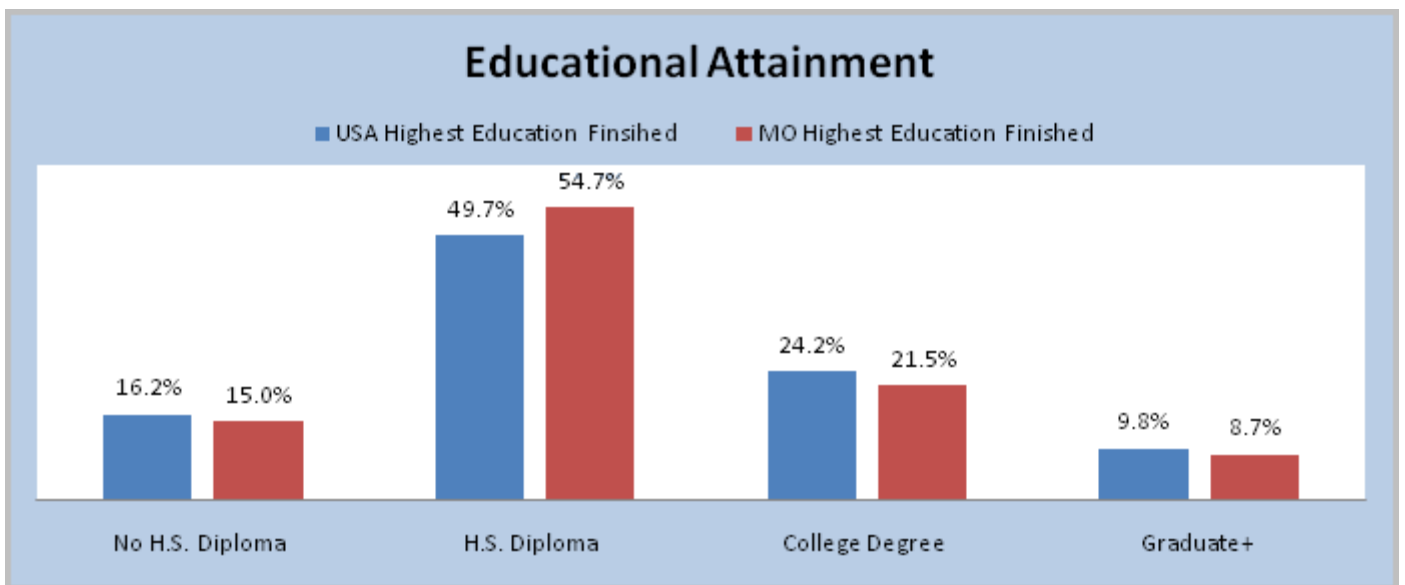
| Race - MO | 2009 Data | Percentage | 2014 Data | Percentage | 09-14 Change |
|-----------------|-----------|------------|-----------|------------|--------------|
| White | 4,985,366 | 83.3% | 5,097,729 | 82.5% | 2.2% |
| Black | 700,225 | 11.7% | 741,488 | 12.0% | 5.6% |
| Hispanic | 167,575 | 2.8% | 197,730 | 3.2% | 15.3% |

| Race - USA | 2009 Data | Percentage | 2014 Data | Percentage | 09-14 Change |
|-----------------|-------------|------------|-------------|------------|--------------|
| White | 223,006,685 | 72.0% | 227,816,067 | 70.3% | 2.1% |
| Black | 39,335,902 | 12.7% | 41,480,024 | 12.8% | 5.2% |
| Hispanic | 48,627,800 | 15.7% | 56,710,970 | 17.5% | 14.3% |

Income and Household Data

| | 2009 Data | 2014 Data | 2009 - 2014 Change |
|-----------------------|-------------|-------------|--------------------|
| Total Households-MO | 2,369,595 | 2,455,513 | 3.5% |
| Per Capita Income-MO | \$25,286 | \$26,373 | 4.1% |
| Avg HH Income-MO | \$62,922 | \$65,335 | 3.7% |
| Total Households-USA | 116,523,156 | 122,109,448 | 4.6% |
| Per Capita Income-USA | \$27,227 | \$28,494 | 4.4% |
| Avg HH Income-USA | \$71,437 | \$74,464 | 4.1% |

Education



Source: ESRI Business Analyst Demographic and Income Forecast

