



Cape Girardeau

Cape Girardeau, Missouri's 17th largest city, had an estimated population of 36,204 in 2005. Cape Girardeau County had 71,161 people, a 3.5% increase since 2000, and is projected to have population growth of 25% by 2025.

Employment

Unemployment Rate

(August 2006; not seasonally adjusted)

Cape Girardeau County 4.1%
Missouri 5.1%

Employment

Private sector employment in Cape Girardeau County in 2005 was largely composed of trade, transportation and utilities (26.8%), education and health services (22.5%) and manufacturing (14%). Federal, state and local government employed 5,342.

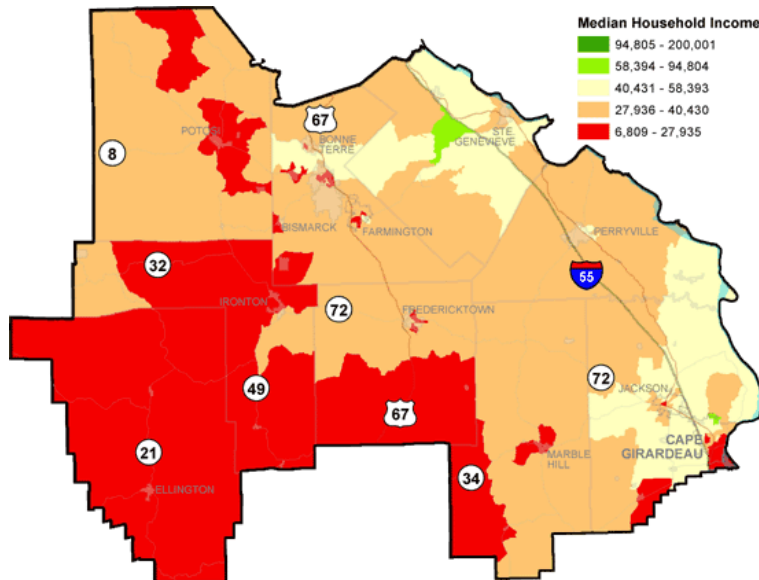
Cape Girardeau Employment by Industry, 2005

Industry	Number	Percent
Natural Resources & Mining	165	0.5
Construction	2,152	6.2
Manufacturing	4,890	14.0
Trade, Transp. & Utilities	9,331	26.8
Information	905	2.6
Financial Activities	1,440	4.1
Prof. & Business Services	3,247	9.3
Education & Health Services	7,839	22.5
Leisure & Hospitality	3,952	11.3
Other Services	908	0.5
Total	34,829	100.0

Income

Median household income in Cape Girardeau in 2005 was \$39,017, lower than the state average of \$41,974.

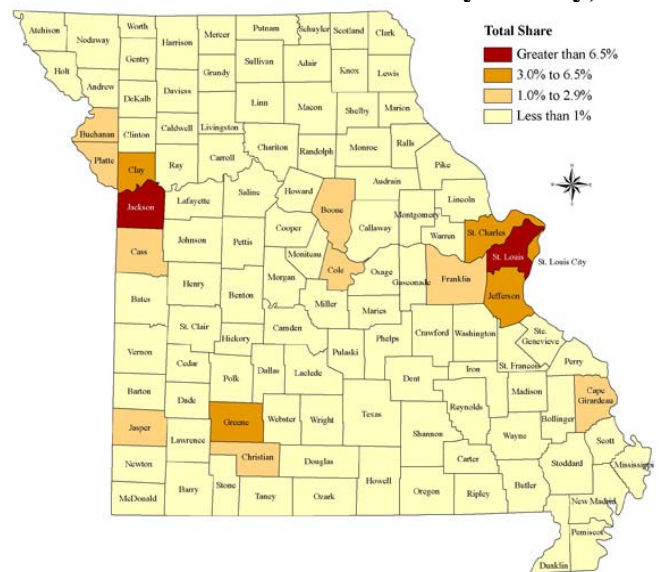
Note: 2000 map.



Economic Share

Cape Girardeau County accounts for 1.2% of Missouri's economy, based on personal income, employment and population. The county ranks 15th in the state for economic share.

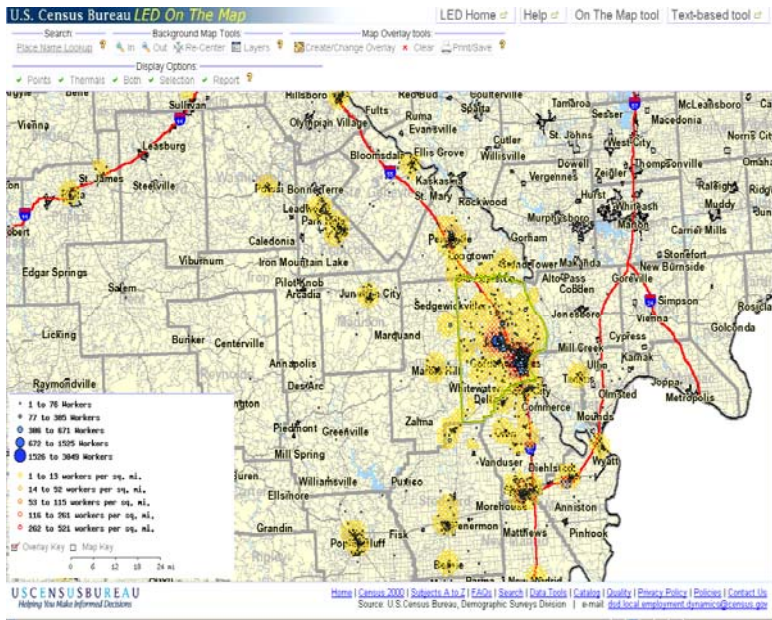
Economic Share in Missouri by County, 2005



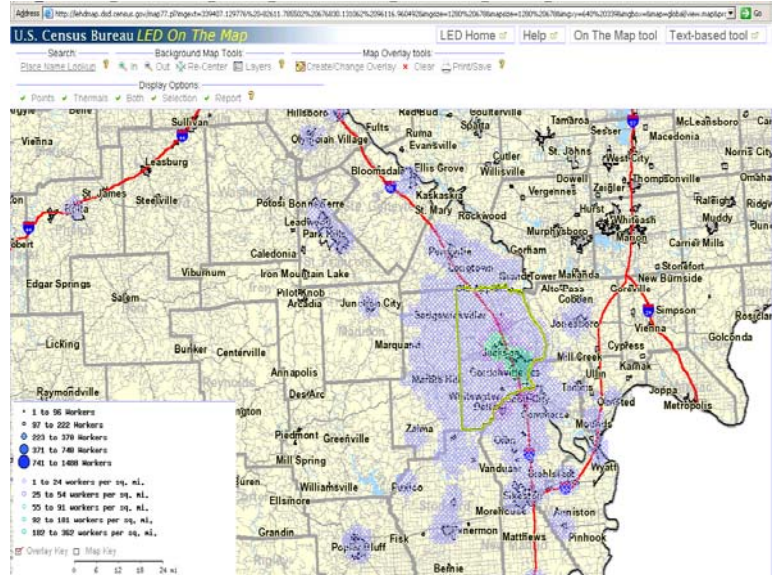
Economic Facts

- Cape Girardeau County per capita personal income was \$28,480 in 2004, ranking 10th among the counties.
- The cost of living in Cape Girardeau was 16% lower than the national average in 2005, and 6% lower than the state average.

Commuting



Cape Girardeau attracts workers from throughout southeast Missouri and southern Illinois.



People who live in Cape Girardeau work throughout southeast Missouri but especially along the I-55 corridor.

Factoids

- Rush Limbaugh began his career in radio as a teenager in his hometown of Cape Girardeau using the name Rusty Sharpe. He attended Southeast Missouri State University for one year – and dropped out after failing two speech courses. He has gone on to become one of the most successful radio personalities of all time.
- The Missouri state flag was designed and created in Cape Girardeau by Marie Watkins Oliver in 1908.
- Cape Girardeau was one of the cities selected for the Downtown Revitalization Economic Assistance for Missouri (DREAM) initiative, to decide how its downtown should develop. The program offers tax credits, technical and planning expertise from the Missouri Department of Economic Development, the Missouri Development Finance Board and the Missouri Housing Development Commission.
- The area's population age 65 + is expected to grow 91% from 1990 through 2025.
- Healthcare is one of Cape Girardeau's leading industries, with Southeast Hospital, the St. Francis Medical Center and D&K Healthcare Resources serving the region.

