

# Central Missouri Hotspot - Columbia

Discovering Employment Trends with Local Employment Dynamics (LED)

Columbia is an economic and employment center for the Central region of Missouri. This report details the workers and industries that make this place a hotspot of economic activity.



## Central Employment Hotspots

Columbia, Jefferson City, Rolla, Osage Beach, Lebanon, Fulton and Waynesville form the largest concentrations of employment in the Central Workforce Investment Area (WIA).

Close to 38% of all private sector workers in the Central WIA are employed in the cities of Columbia (17.9%), Jefferson City (11.9%), Lebanon (4.1%) and Rolla (3.7%).

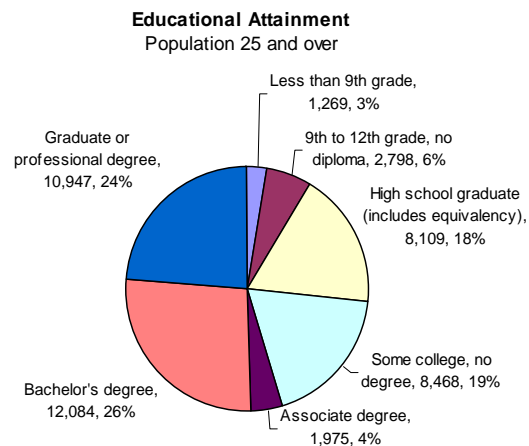
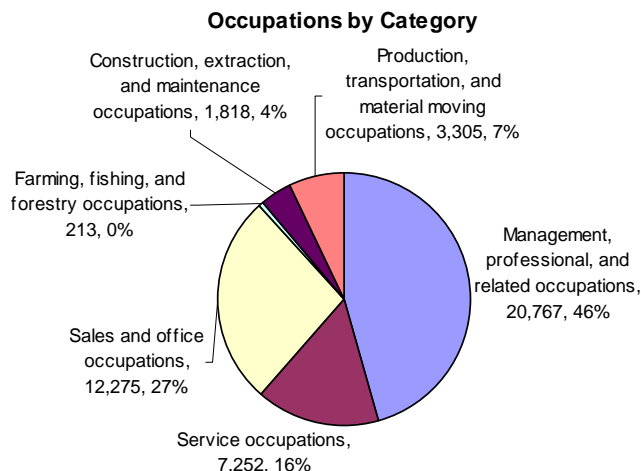
Workforce Investment Areas are the result of the federal Workforce Investment Act of 1998 (WIA) which funds a number of employment and training programs across the nation.

In 2003, 67% of Columbia's workers worked in the private sector. This means that 33% were employed in the public sector.



## Columbia Census Overview

In 2000, Columbia had a population of 84,780 with a median age of 27 years old. Most residents were employed in management and professional occupations (48%) and 50% had a bachelor's degree or higher.



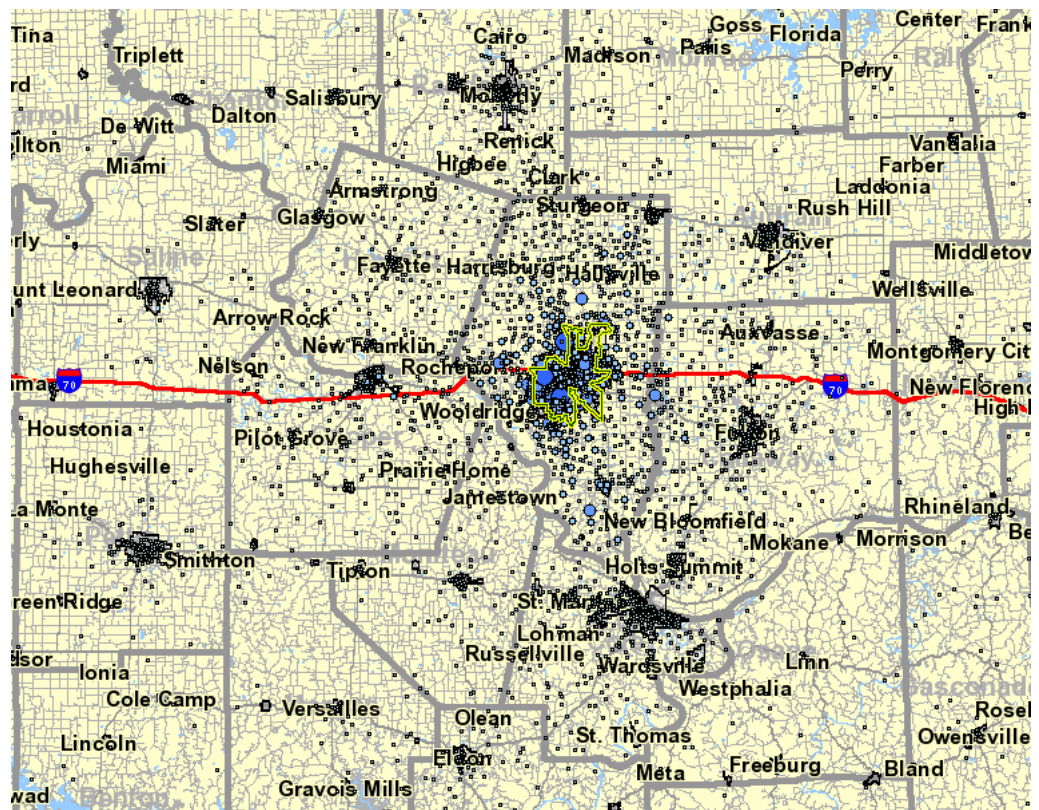
## Where do Columbia's Workers Live?

Efficient road networks such as I-70 and Highway 63 enable many of Columbia's workers to live in neighboring cities such as Moberly, Fulton and Jefferson City. The local road network also plays a role in the ability of Columbia to get 33.8% of its workforce from the surrounding rural areas. Most Columbia workers (61.2%) live in Boone County.

The Local Employment Dynamics (LED) program is a partnership between the U.S. Census Bureau and the agencies in each state that generate and analyze labor market information. The LED Origin-Destination mapping tool allows you to designate either an area where workers work and determine where they live, or designate where residents live and determine where those workers commute.

Labor Shed Report - Where Workers Live that are Employed in Columbia, Missouri		
<u>Baseline Count of Jobs</u>	2003	
	Count	Share
All Jobs (Private Sector Only)	41,812	100.0%
<u>Cities/Towns Where Workers Live</u>	2003	
	Count	Share
* Columbia, MO	16,408	39.2%
* Unincorporated Areas	14,138	33.8%
* Out-of-State	1,045	2.5%
* Jefferson City, MO	667	1.6%
* Kansas City, MO	539	1.3%
* All Other Locations	9,015	21.6%
<u>Counties Where Workers Live</u>	2003	
	Count	Share
* Boone Co., MO	25,600	61.2%
* St. Louis Co., MO	1,679	4.0%
* Callaway Co., MO	1,291	3.1%
* Cole Co., MO	1,137	2.7%
* Out-of-State	1,045	2.5%
* All Other Locations	11,060	26.5%
Data Sources US Census Bureau, LED Origin-Destination Data Base (2nd Quarter 2003)		

## LED On-the-Map Where Columbia Workers Live



## What Industries Employ Columbia Workers

Columbia, Missouri Profile - Characteristics of Employed Workers		
Area Employment by Category	2003	
	Count	Share
<b>Total Employers</b>	3,078	
* All Jobs	62,387	100.0%
* All Jobs (Private Sector Only)	41,812	67.0%
Jobs by Industry Type (2-digit NAICS)		
Private Sector Only	2003	
	Count	Share
* Retail Trade	7,122	17.0%
* Health Care and Social Assistance	7,045	16.8%
* Accommodation and Food Services	6,321	15.1%
* Manufacturing	2,788	6.7%
* Management of Companies and Enterprises	2,325	5.6%
* Finance and Insurance	2,256	5.4%
* Construction	2,244	5.4%
* Wholesale Trade	1,978	4.7%
* Other Services (excluding Public Administration)	1,836	4.4%
* Administration & Support, Waste Management and Remediation	1,759	4.2%
* Professional, Scientific, and Technical Services	1,506	3.6%
* Information	1,175	2.8%
* Educational Services	1,168	2.8%
* Real Estate and Rental and Leasing	857	2.0%
* Transportation and Warehousing	718	1.7%
* Arts, Entertainment, and Recreation	577	1.4%
* Utilities	120	0.3%
* Agriculture, Forestry, Fishing and Hunting	15	0.0%
* Public Administration	2	0.0%
* Mining	0	0.0%

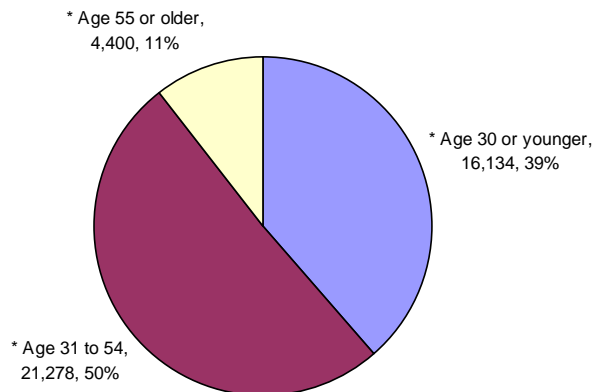
Data Sources US Census Bureau, LED Worker Origin/Destination Database (2nd Quarter 2003)

### Jobs by Worker Age

### Jobs by Earnings Paid

There are more jobs counted than people in the workforce due to the fact that some people hold down more than one job at a time. A part-time and full-time job are also counted equally in this analysis.

Private Sector Jobs by Worker Age



Private Sector Jobs by Annual Earnings Paid

